



**CHANGING THE  
WAY THE WORLD  
MANAGES SAFETY**



**SMART!Hazard**  
MANAGER



The road to safety success!

## **SMART!Hazard Manager Features**

- The SMART!Hazard Manager app is a cloud based enterprise ready safety management tool.
- It can be accessed from any PC or mobile device.
- It utilizes an innovative risk reduction measurement that will prove to be the most valuable safety metric ever used!



# SMART!Hazard Manager Features

SMART!Hazard Manager forms the foundation of your safety program.

It focuses all attention on recognizing and properly addressing the hazards and unsafe behaviors that are part of your employees' lives.



# SMART!Hazard Manager Features

With this app, there's no training necessary; no IT costs; you can simply log in and:

1. Set a risk reduction goal for any area or manager
2. Enter hazards
3. Resolve hazards
4. Instantly view your dashboard, showing your risk reduction efforts, by any area for any timeframe, including Completed, In Progress, and Past Due. Also shows your projected Accident's Prevented and Projected Costs Saved.
5. Reward top performers and manage low performers.





# SMART!Hazard Manager Features

The SMART!Hazard Manager application:

- Is able to engage more people within your business to be involved in the safety process.
- Instantly shows and measures safety improvements by area, department and/or site.
- Requires less of your time for much better results!
- Helps you establish realistic goals for supervisors and entire departments or sites, by obtaining actual, measurable hazard reduction information from each area.
- Frees you from relying on rear view mirror indicators like OSHA recordables, dart rates or workers' comp costs.
- Allows you to make continuous improvements with a process that run's itself!



## **SMART!Hazard Manager Features**

The SMART!Hazard Manager is a cloud based application, which means you can use it on a computer or with any mobile device at anytime and anywhere you need.

Anyway you use it, you and your managers will find it be to an easy, intuitive smart tool that systematically addresses all safety hazards.



# SMART!Hazard Manager Features

To use this app, simply enter a new hazard (or import your existing hazards) and more details as promoted by popup menus, and you're done! This application:

1. Takes any hazard or program deficiency and ranks the risk of injury based on severity, probability and frequency
2. Establishes the best corrective action based on Hierarchy of Control questions.
3. Develops the best priority based on 6 drop down management questions.
4. Re-ranks residual risks after hazard is resolved.
5. The risk difference is automatically measured and instantly charted, so you can use this improvement in risk as a primary metric!





# SMART!Hazard Manager Features

It brings you into full compliance with all Safety Management Systems such as OSHA's Volunteer Protection Program - VPP, OSHAS 18001, OSHA's Injury Illness and Prevention Program - I2P2, ANSI Z10-2012, and the new ISO 45001 for hazard management.



The SMART!Hazard Manager application will also create a defensible, documented explanation of why some issues are not yet currently being addressed.

# SMART!Hazard Manager Features

Let Simply SMART! Safety's SMART!Hazard Manager form the foundation of your Safety Program/Safety Management System and we guarantee you'll be satisfied instantly with the benefits it provides.

Bench-marked against all other programs, our safety application was designed with input from real life users.

We think you'll be surprised and excited to find how delightfully sophisticated and easy to use it really is.



A green highway sign with white text is mounted on a grey metal structure. The sign is rectangular with rounded corners and a white border. The background of the sign is a solid green color. The text is in a bold, white, sans-serif font. The sign is positioned over a road that curves into the distance. The road has a dashed yellow center line and solid yellow edge lines. The landscape is green and hilly, with a bright sun or light source on the horizon, creating a lens flare effect. The sky is blue with light clouds.

**IT IS THIS  
SIMPLE**

Reducing hazards and unsafe behaviors  
will reduce accidents.



**DREAM BIG!**



Start managing with the RISK REDUCTION Metric!

It works much better and takes less time than what you do now!



# PRICING

(30 day full refund)

Multi-site license discounts available.

PACKAGE DESCRIPTION	Basic Monthly	Basic Complete Monthly	Basic Annual	Basic Complete Annual	Jumpstart	Jumpstart Complete
<b>PRICE</b>	\$200/mo	\$400/mo	\$1,835	\$3,670	\$4,500 + travel expenses	\$6,335 + travel expenses
<b>Annual Renewal rate</b>	-	-	\$1,835	\$3,670	\$1,835	\$3,670
<b>Customized look with your logo &amp; colors</b>	√	√	√	√	√	√
<b>Import your existing hazards and corrective actions</b>			√	√	√	√
<b>Up to four webinar workshops for supervisors/managers explaining the basics of identification and minimization of hazards and how to incorporate the Risk Reduction Ratings into everyday processes.</b>			√	√	√	√
<b>Observation tracking with mobile device and incorporation into Risk Reduction management process.</b>		√		√		√
<b>2 ½ day site assessment to jumpstart SMART!Hazard Manager. Includes:</b> <ul style="list-style-type: none"> <li>• 1 year license to SMART!Hazard Manager</li> <li>• Introductory manager's workshop</li> <li>• Hands on assessment and tool utilization training for up to 20 users</li> <li>• Closing report of findings/next steps workshop</li> </ul>					√	√
<b>Professional monthly monitoring and review of Corrective Actions with comments/concerns via email.</b>	\$500/mo					





**The following 4 slides are screen shots from the  
SMART!Hazard Manager Dashboard**

**NOTE: These slides show a view from corporate of just 3 plants. The dashboard can be filtered just as easy by  
departments or any group.**

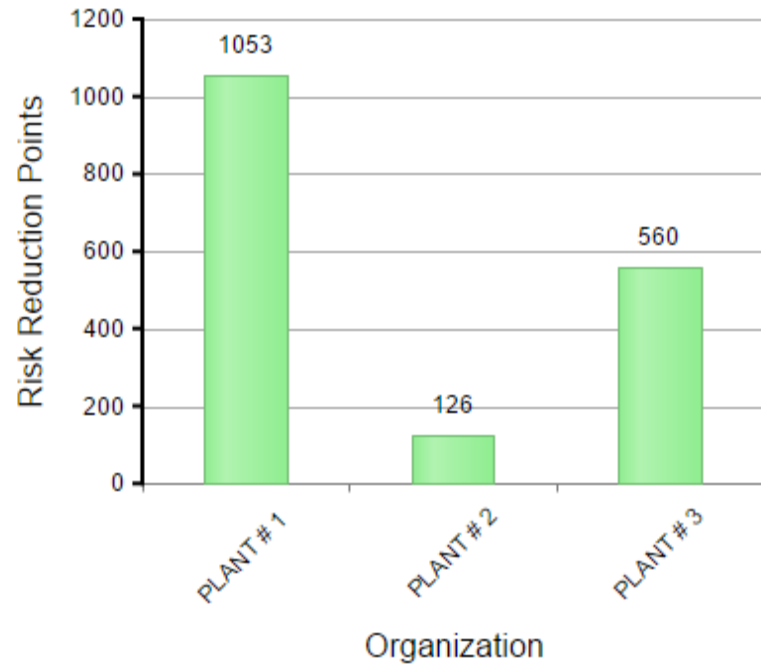
# SAFETY DASHBOARD - PREVENTING ACCIDENTS & REDUCING COSTS BY REDUCING HAZARDS

VIEWING: PLANT # 1 ; Assembly; Machine S

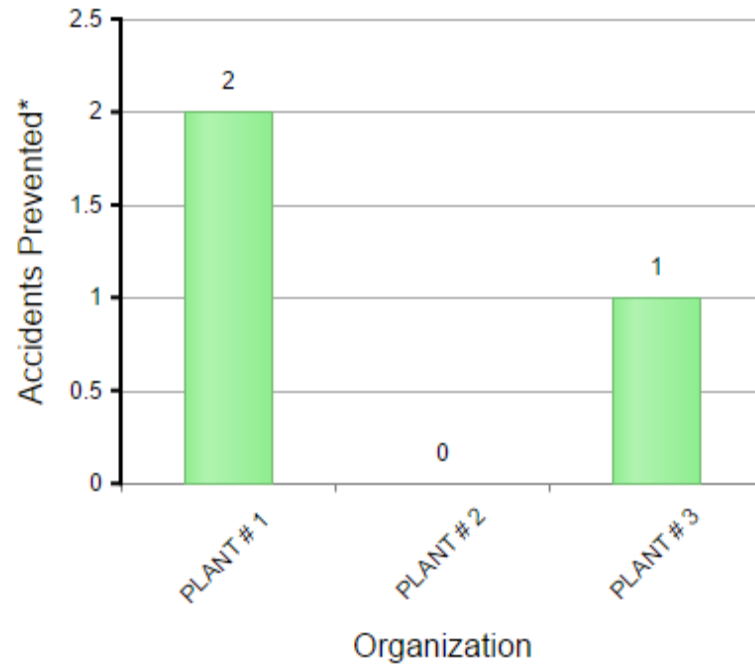
## COMPLETED CORRECTIVE ACTIONS

PERIOD:

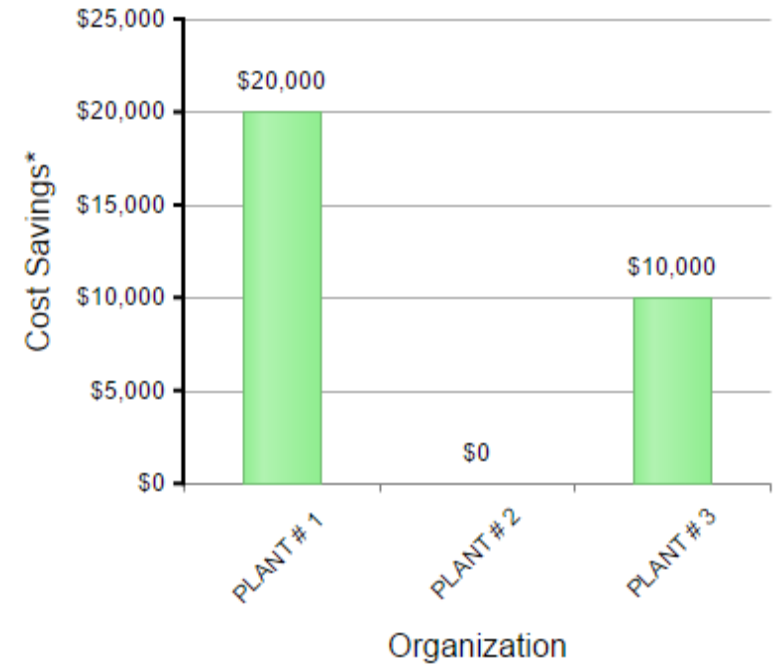
### Risk Reduction Points



### Accidents Prevented (Projected)



### Cost Savings (Projected)



Risk Reduction Points are the difference between the original risk and the residual risk of each hazard entered into the system. To improve your score, get out there and identify and resolve more hazards and unsafe behaviors!

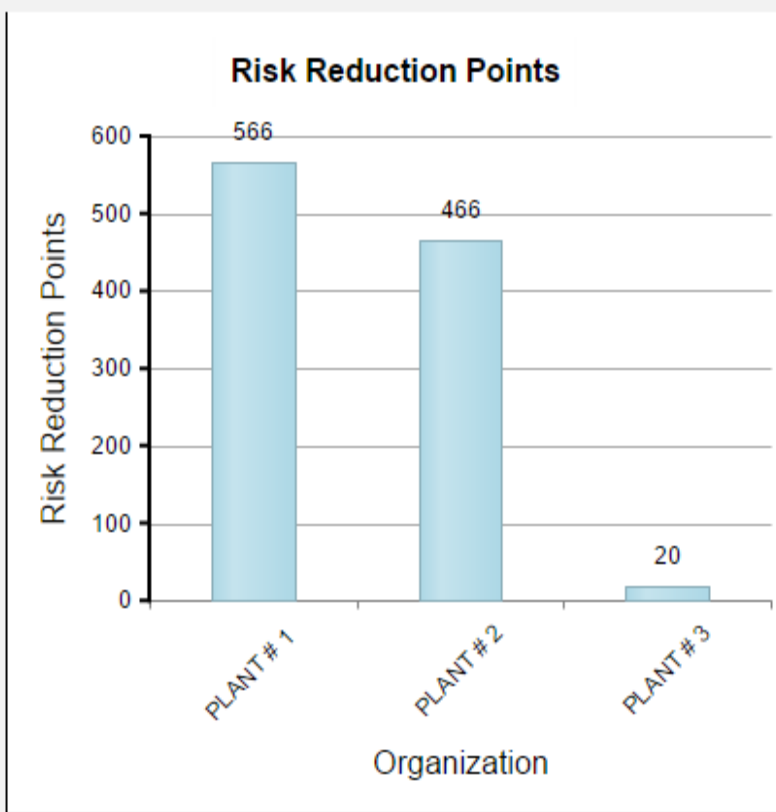
\* 500 Risk Reduction Points = One Accident Prevented

\* One Accident Prevented = \$10,000 in Cost Savings

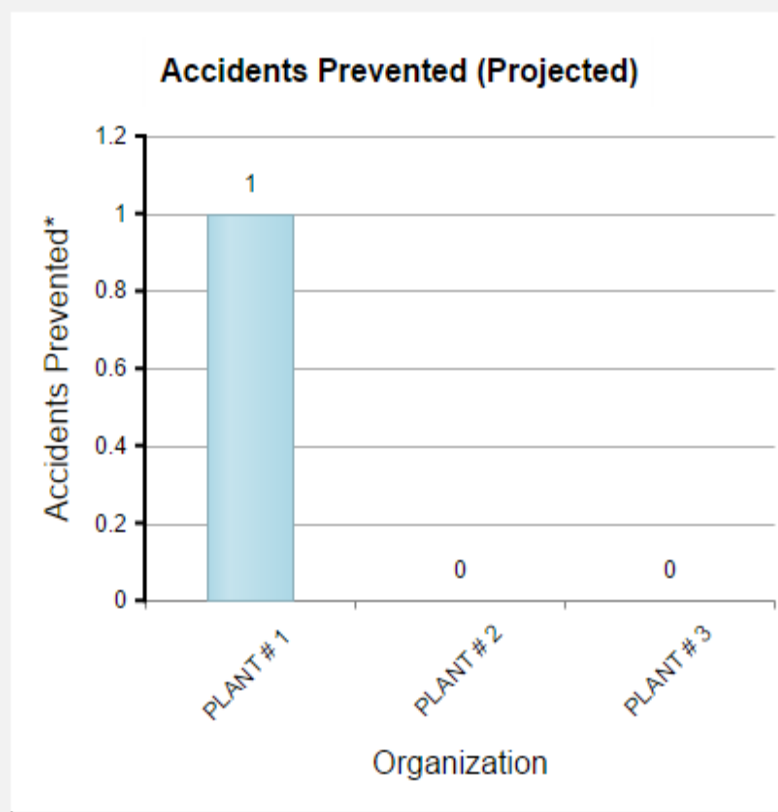
# SAFETY DASHBOARD - PREVENTING ACCIDENTS & REDUCING COSTS BY REDUCING HAZARDS

VIEWING: PLANT # 1 ; Assembly; Machine S  ▼

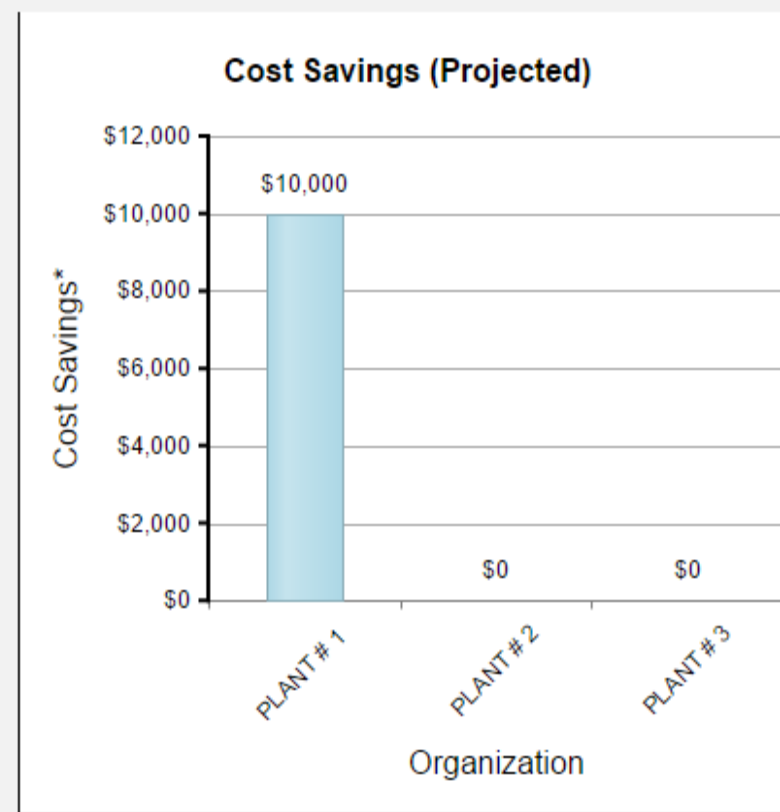
## IN PROCESS CORRECTIVE ACTIONS



Risk Reduction Points are the difference between the original risk and the residual risk of each hazard entered into the system. To improve your score, get out there and identify and resolve more hazards and unsafe behaviors!



\* 500 Risk Reduction Points = One Accident Prevented



\* One Accident Prevented = \$10,000 in Cost Savings

# SAFETY DASHBOARD - PREVENTING ACCIDENTS & REDUCING COSTS BY REDUCING HAZARDS

VIEWING:

REFRESH

ADD NEW CONCERN

VIEW ALL CONCERNS

REVIEW CHARTS

Simply**SMART!**Safety


DEMO COMPANY

 HOME

 MY MODULES

 ADMIN

 MY ACCOUNT

 HELP

 ORDER NOW

## TOP OPEN CONCERNS AND ACTION ITEMS

ID #	Organization	Department	Concern	Risk Rating	Corrective Action(s)	Due	
72	PLANT # 1	Receiving	Dislodged horizontal beam in pallet rack @ L201B..	100	[Engineering] Unload bay, check for damage, reset or replace rack as needed	01/23/2015	<a href="#">VIEW</a>
40	PLANT # 2	Assembly	MISSING GUARD ON SAW	93	[Engineering] REPLACE GUARD	06/17/2014	<a href="#">VIEW</a>
63	PLANT # 2	Assembly	Fork truck drivers going forward with large loads, some elevated above line of sight so they could	87	[Administrative] Review material and then retrain all drivers. Implement discipline procedures for violations, including supervisors.	10/23/2014	<a href="#">VIEW</a>
53	PLANT # 1	Assembly	On workstation 81 pushing knob into clear pack requires excessive force to hand/wrist.	87	[Engineering] Work with QC and vendor to get clear pack made to specifications.	11/30/2014	<a href="#">VIEW</a>
18	PLANT # 2	Assembly	Pump is not working, several gages are missing and/or not working	87	[Engineering] Fix pumps and gages.	01/18/2015	<a href="#">VIEW</a>

# SAFETY DASHBOARD - PREVENTING ACCIDENTS & REDUCING COSTS BY REDUCING HAZARDS

VIEWING: PLANT # 1 ; Assembly; Machine S

REFRESH

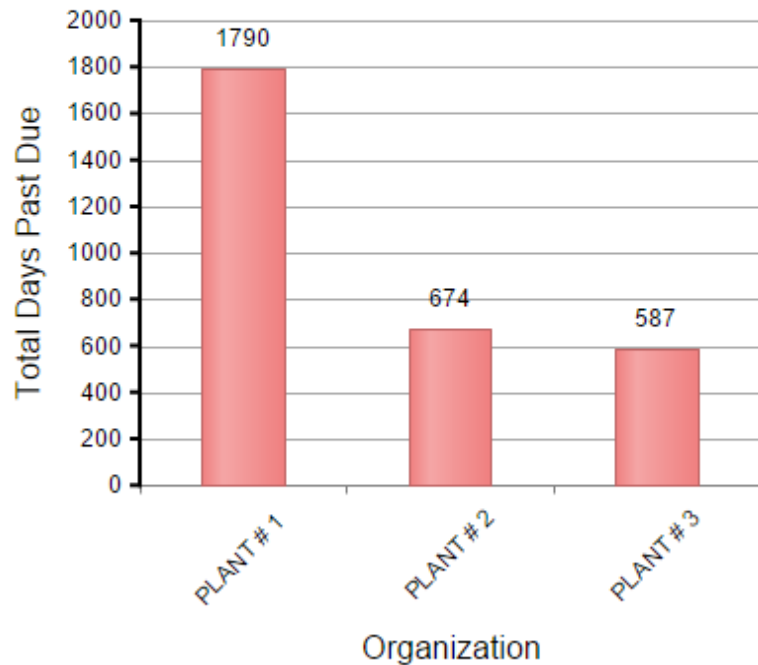
ADD NEW CONCERN

VIEW ALL CONCERNS

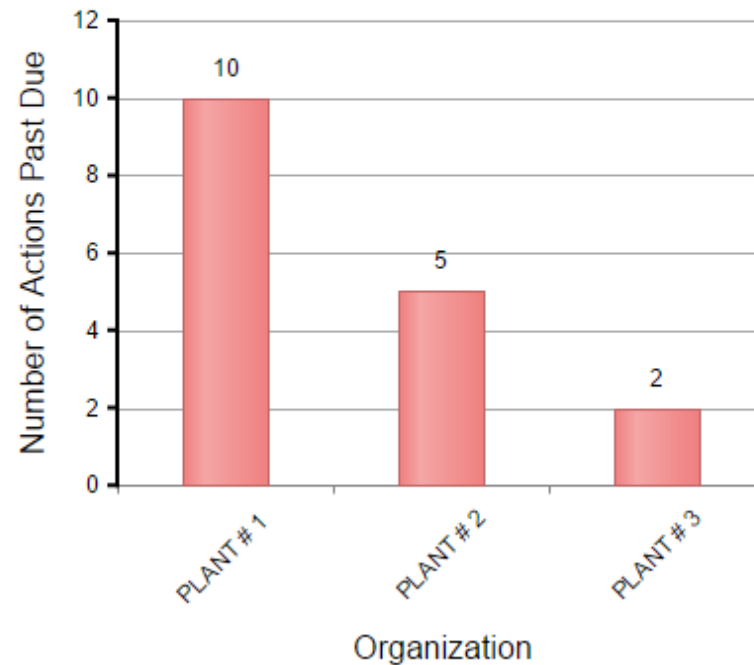
REVIEW CHARTS

## CORRECTIVE ACTIONS PAST DUE

Total Days Past Due



Total Number of Corrective Actions Past Due



Average Days Past Due

